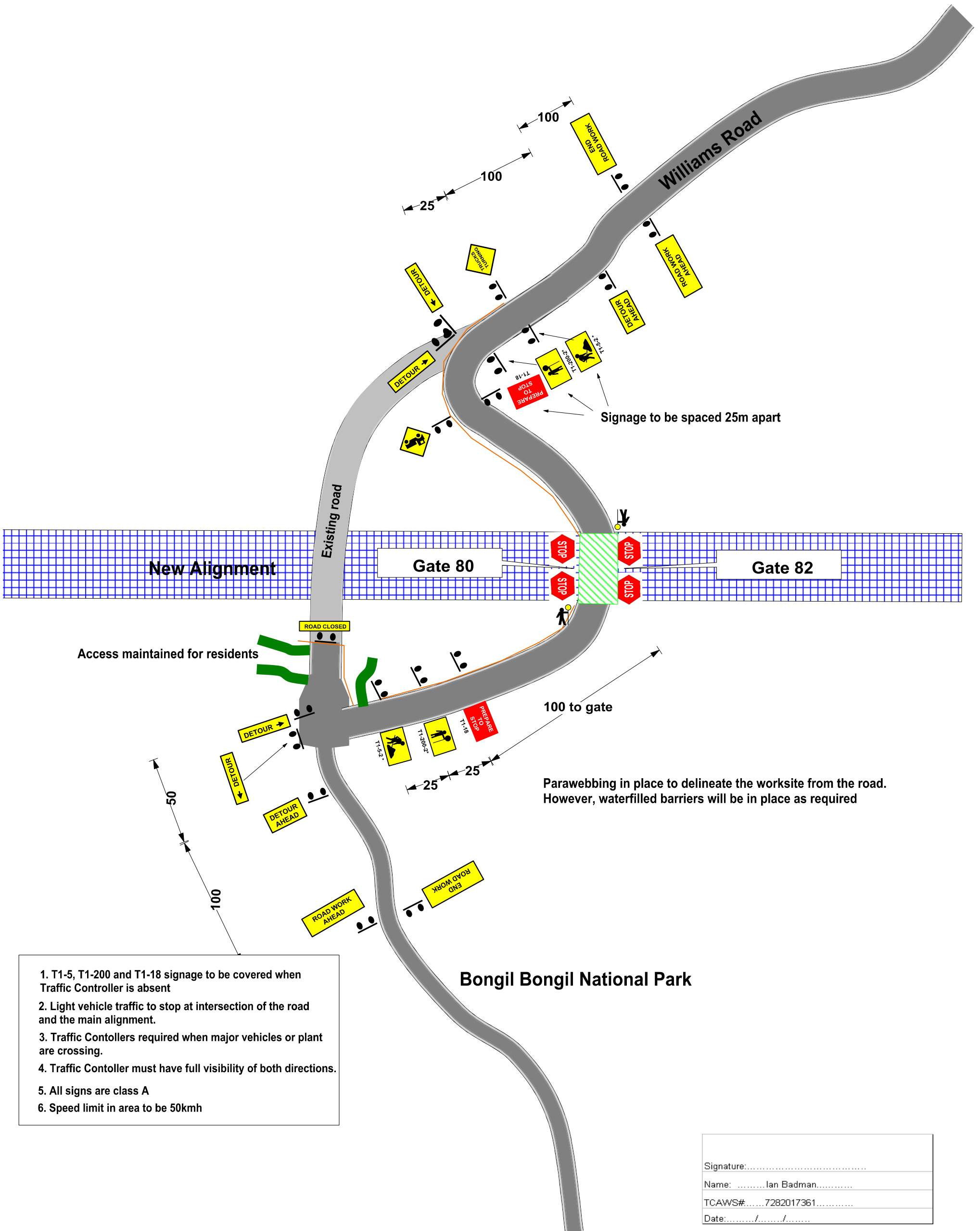




TCP IB 052 rev A Williams Road - Stage 2

Speed limit 50kmh



Signage to be spaced 25m apart

100 to gate

Parawebbing in place to delineate the worksite from the road. However, waterfilled barriers will be in place as required

1. T1-5, T1-200 and T1-18 signage to be covered when Traffic Controller is absent
2. Light vehicle traffic to stop at intersection of the road and the main alignment.
3. Traffic Contollers required when major vehicles or plant are crossing.
4. Traffic Contoller must have full visibility of both directions.
5. All signs are class A
6. Speed limit in area to be 50kmh

Signature:.....
Name: Ian Badman.....
TCAWS#..... 7282017361.....
Date:...../...../.....