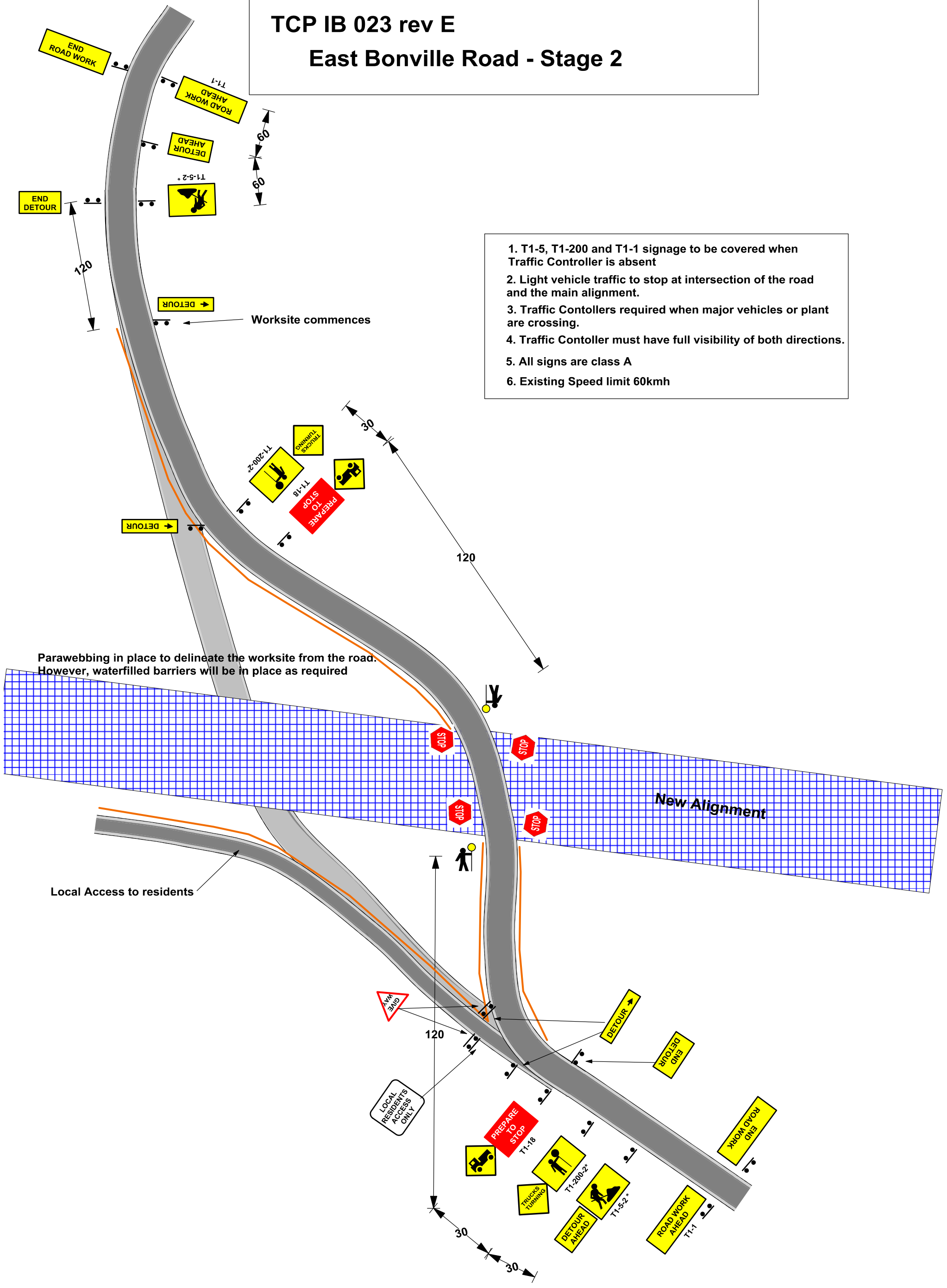


Legend
Parawebbing

TCP IB 023 rev E East Bonville Road - Stage 2

1. T1-5, T1-200 and T1-1 signage to be covered when Traffic Controller is absent
2. Light vehicle traffic to stop at intersection of the road and the main alignment.
3. Traffic Contollers required when major vehicles or plant are crossing.
4. Traffic Contoller must have full visibility of both directions.
5. All signs are class A
6. Existing Speed limit 60kmh



Parawebbing in place to delineate the worksite from the road. However, waterfilled barriers will be in place as required

Local Access to residents

New Alignment

Worksite commences

END DETOUR

END ROAD WORK

T1-1
ROAD WORK AHEAD

DETOUR AHEAD

T1-5-2*

DETOUR

T1-200-2*

TRUCKS TURNING

T1-18

PREPARE TO STOP

DETOUR

STOP

STOP

STOP

STOP

GIVE WAY

LOCAL RESIDENTS ACCESS ONLY

T1-18
PREPARE TO STOP

TRUCKS TURNING

T1-200-2*

DETOUR AHEAD

T1-5-2*

END DETOUR

ROAD WORK AHEAD
T1-1

END ROAD WORK