

Bonville upgrade

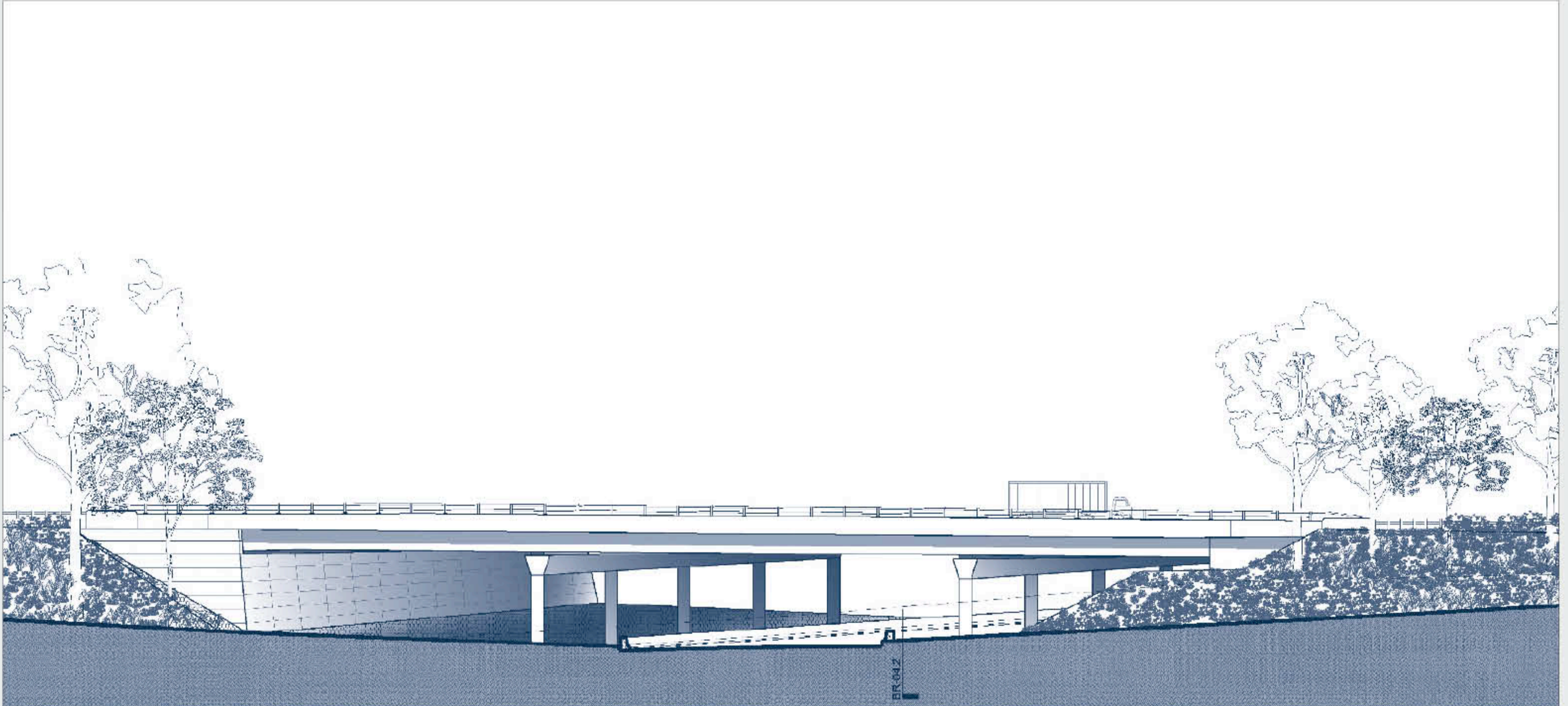
Upgrading the Pacific Highway



Australian Government



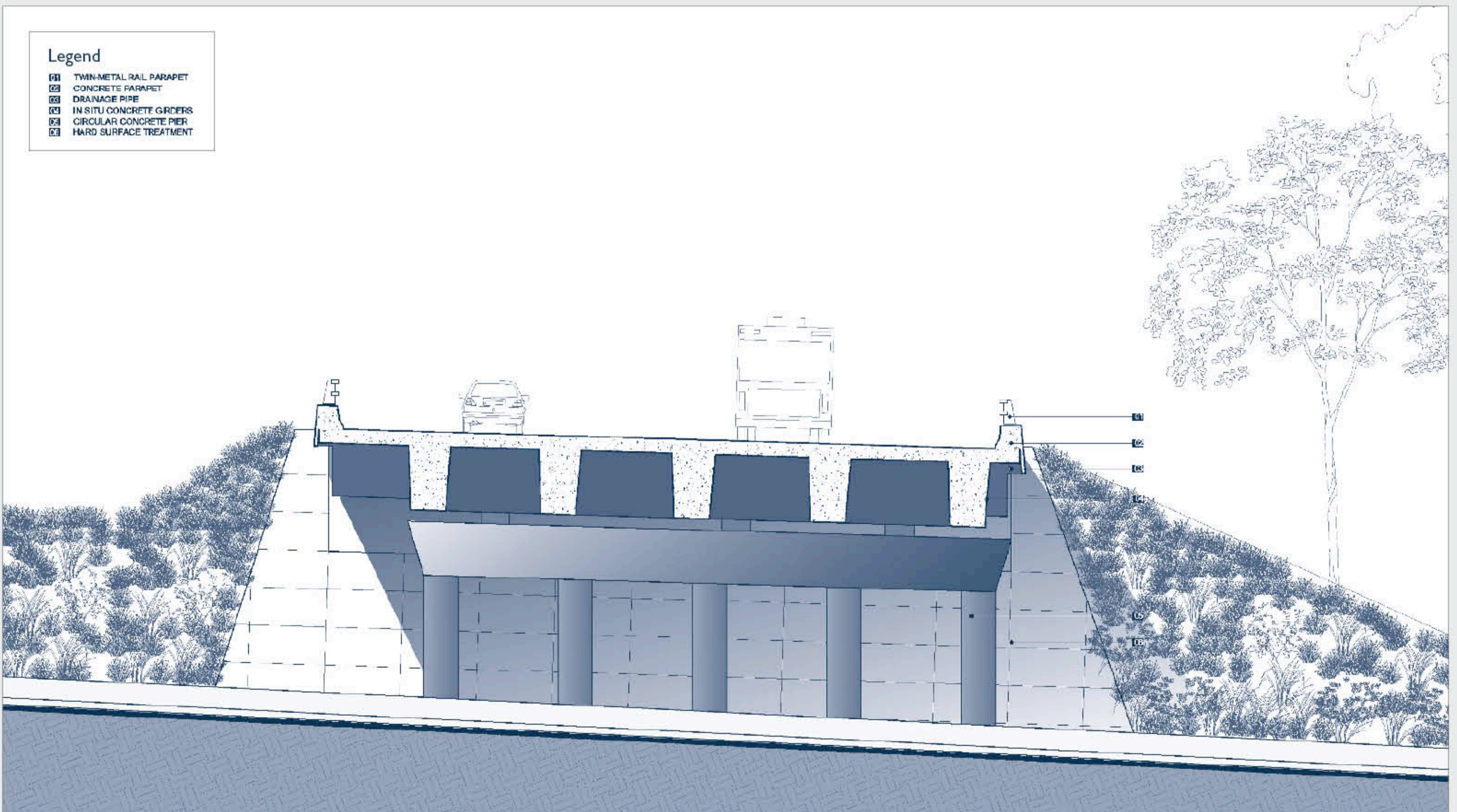
New South Wales Government



Northbound bridge over local access road eastern elevation

Legend

- 01 TWIN-METAL RAIL PARAPET
- 02 CONCRETE PARAPET
- 03 DRAINAGE PIPE
- 04 IN SITU CONCRETE GIRDERS
- 05 CIRCULAR CONCRETE PIER
- 06 HARD SURFACE TREATMENT



North bound bridge over local access road cross sectional elevation

Bridges over service road

Twin bridges carry the highway over the local access road through the Bongil Bongil National Park. The local road passes under the highway at an acute angle and the bridges are directly visible from the local road. The horizontal alignment of the highway at this location is such that the bridges are spaced approximately 45 metres apart.

Because of its particularly acute angle, the northbound bridge cannot be constructed using Super-T girders, whereas they can be used for the southbound bridge.

To achieve a similar appearance in elevation, it is proposed to employ concrete girders with an integral concrete deck for the northbound bridge. The girders have a cross-sectional profile and spacing similar to those for the southbound bridge's Super-Ts. For both bridges the girders are supported on circular

concrete piers. The overall appearance of the superstructure of the two bridges will be similar even though they are spaced well apart. The southern abutment of the northbound bridge has been designed as a vertical wall to accommodate the required width of fauna passage adjacent to the local road.

Where possible, the design provides a sense of openness and makes it less subject to graffiti attack. The sloping bridge abutments are finished with stone pitching or pavers to prevent water scouring and provide a readily maintained surface.

The use of twin metal rails along the top of the traffic barrier maximises views from the highway to the surrounding countryside and the design of the bridge conceals the pipes required for the on-bridge drainage system.